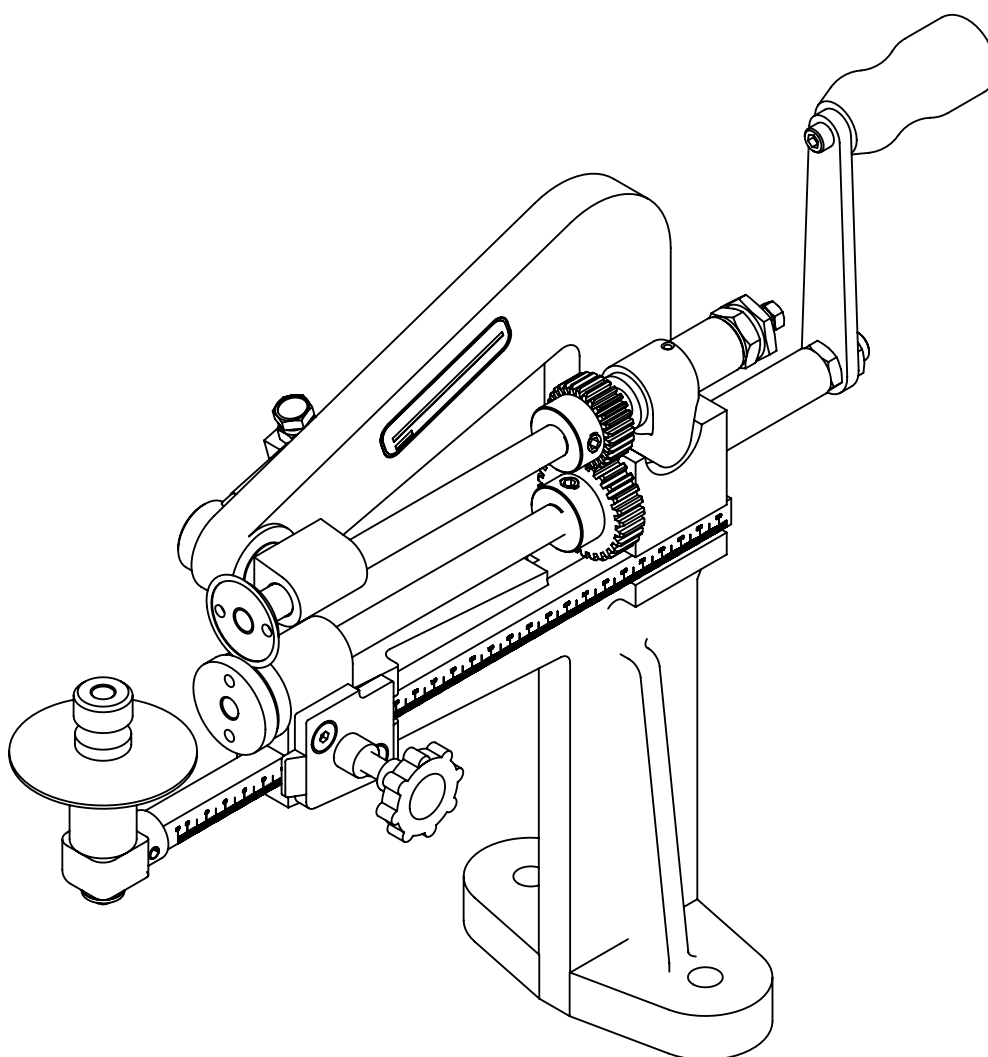




## Operation and Maintenance Guide



GC-42

Models	Descriptions
GC-42	Gasket Cutter

Read this manual carefully before installing, operating or servicing this equipment. It's the responsibility of the employer to ensure this manual is read by the operator. Please preserve this manual.

This document is issued with Product Serial No

## Table of Contents

3	Introduction
3	Technical Data
3	Operating Instructions
4	Maintenance
5	Disassembly and Re-assembly
6	Exploded View for GC-42
7	Bill of Materials for GC-42
8	Standard Accessories
8	Optional Accessories
9	Eu Declaration Of Conformity
10	Warranty Certificate

## Introduction

Teryair GC-42 cuts perfect circles from 2 inches, also irregular gasket can be easily cut by following drawn outline. Cuts gasket fast and easily from materials like asbestos, rubber, cork, felt PTFE and similar light gauge materials.

## Technical Data

Teryair Model No	GC-42
Standard Accessories	11" Scale
Optional Accessories	Extension Bar for 22 to 42 Dia Circle
Weight, Kgs	9

## Operating Instructions

This GC- 42 Gasket cutting machine , is a low cost, easy to use machine , that cuts gasket of any shape and size with

speed and early from all the conventional types of packing materials. It is easy

to install and can be bolted only with two bolts ( supplied wit machine) on any wooden top bench table and can be

carried any where in the workshop for its use.

This can be used in ships & shipyards, Chemical plants, power plants, shipbuilding yards, oil refineries, refrigeration

plants, paper plants, and allied industries.

GC- 42 machine can cut gaskets of perfect round shapes from 2 " I.D. (50mm) to 22" O.D.

(560 mm) with one scale . Its use is extended by using another scale to cut perfect round shaped

gasket from 22" I.D ( 560 mm) to 42 " O.D. (1066 mm ) in short time conveniently. ( This attachment is optional.)

Also this machine can used to cut any odd shapes and size and also of various materials up to 3mm thickness.

### A) STEPS FOR CUTTING CIRCULAR GASKET.

**Step 1** - cut approximate raw size of gasket from roll.

**Step 2** - Punch / drill a hole of dia 7/16 " ( 11mm) in center of the cut gasket.

**Step 3** Lift the Upper cutter Disc ( 8) of the machine by using its cam lever (18) Unscrew and take out knob (17) on pivot pin (9) and mount punched / drilled gasket on pivot pin (9) to rest on support plate and then tighten knob (17) from top.

**Step 4** - Set the radius of required gasket size ( 1/2 of diameter ) after loosening lock screw (32) and sliding moveable scale (5) in its slot, tighten the lock screw (32) when the desired radius is adjusted against the edge for setting.

**Step 5** - Lower the upper cutter disc ( 8 ) by operating cam lever (18) so that, the cutter bites in the gasket.

**Step 6** - Hold the Handle (15) and start rotating it so that gasket starts rotating and the cutter will cut the circular gasket to its desired diameter. Continue to rotate the handle (15) till the gasket is cut to its thickness.

**Step 7** Lift the Upper cutter Disc (8) by operating cam lever (18) Unscrew and take out Knob (17) and then remove the desired circular gasket from pivot pin (9) Replace the knob (17) on to the pivot pin (9)

**B) STEPS TO CUT IRREGULAR SHAPED GASKET**

**Step 1** - Cut out approximate raw size of gasket from oil.

**Step 2** - Mark the required irregular shape on gasket.

**Step 3** - Lift the upper cutter disc (8) of the machine by using its cam lever (18)

**Step 4** - Loosen lock screw (32) and slide moveable scale (5) so that pivot arm (35) does not obstruct the cutting action , or if gasket to be cut is rather big enough, let the pivot pin support the gasket from bottom.

**Step 5** - Bring the marked line on the gasket below cutting edge of the upper cutter disc (8)

**Step 6** - Lower the upper cutter disc (8) by operating cam lever (18) So that the cutter bites in the gasket on marked line.

**Step 7** - Hold the handle (15) and start rotating it ,so that the gasket moves. Hold the gasket and feed it along the markings below the upper cutter disc (8) The cutter will cut the gasket along the marking , as long as handle is rotated

**Step 8** - Stop rotating the handle after desired shape of gasket is fully cut.

**Maintenance**

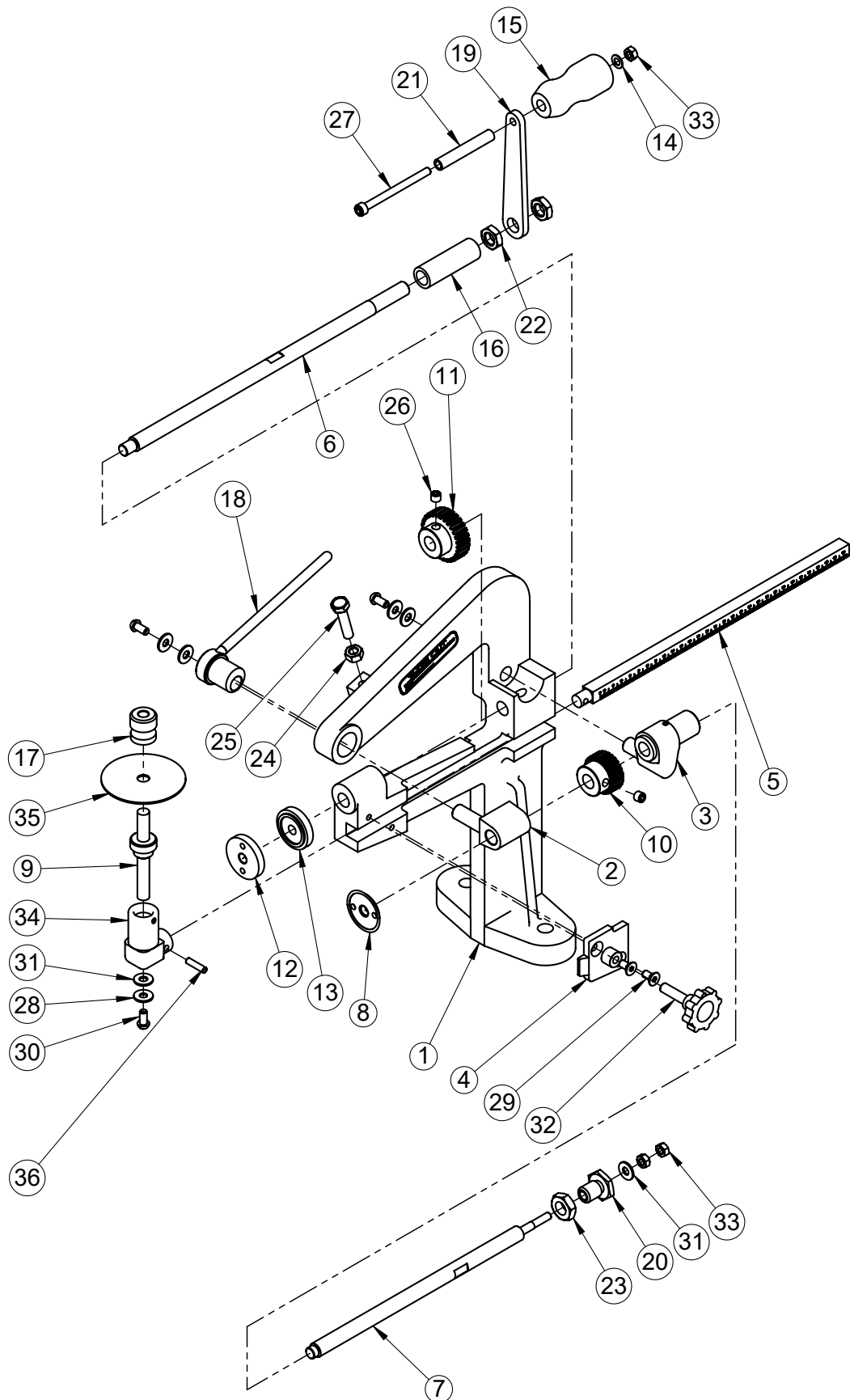
Oil holes are provided at front side, in spindle front bush (2) Spindle rear bush (3) and in pivotarm (35)

1. For smooth functioning sufficient oil drops should be put through the oil holes and in gears ( 10,11) after and before use.
2. Clean the machine near cutting area and rotating parts after some use
3. Re - Sharpen the cutter on any bench grinder taking care that cutting edge of the cutter is not damaged or flattened.

## Disassembly and Re-assembly

- a. Unscrew Knob (32) & CSK Screws (29) from Clamp plate (4)
- b. Remove Scale (5) & Pivot arm (34) assembly from Stand (1). Remove Roll Pin (36) from Pivot arm (34) and remove Scale (5) to replace it with new one. (If found damaged/worn-out)
- c. Unscrew Screw (30) with Washer (28) & Washer (31) from Pivot Pin (9). Unscrew Knob (17) from Pivot Pin (9) and remove Support Plate (35).
- d. Unscrew Lower Cutter Disc (12) & Support Disc (13) from Lower Spindle (6) with the help of special wrench and replace it with new one. (If found damaged/worn-out)
- e. Unscrew Upper Cutter Disc (8) from Upper Spindle (7) with the help of special wrench and replace it with new one. (If found damaged/worn-out)
- f. Unscrew Screw (30) with Washer (28) & Washer (31) from Spindle Front Bush (2) and remove Cam with Lever (18) from Stand (1)
- g. Unscrew Hex Nuts (33) with Washer (31) from Upper Spindle (7) & Loosen Lock Nut (23) to unscrew Adjusting Nut (20) from Spindle Rear Bush (3) and replace it with new one. (If found damaged/worn-out)
- h. Unscrew Grub screw (26) from Upper Gear (10) and remove Upper Spindle (7) from Spindle Rear Bush (3) to replace it with new one. (If found damaged/worn-out)
- i. Remove Spindle Front Bush (2) and Upper Gear (10) and replace it with new one. (If found damaged/worn-out)
- j. Unscrew Screw (30) with Washer (28) & Washer (31) from Spindle Rear Bush (3) and replace it with new one. (If found damaged/worn-out)
- k. Unscrew Grub screw (26) from Lower Gear (11) and remove Lower Gear (26) from Lower Spindle (6) to replace it with new one. (If found damaged/worn-out)
- l. Unscrew Allen Screw (27) from Hex Nut (33) and remove Washer (14), Handle (15) & Tube (21) to replace it with new one. (If found damaged/worn-out)
- m. Unscrew Hex Lock Nut (22) from Lower Spindle (6) & remove Handle Arm (19).
- n. Unscrew Hex Lock Nut (22) from Lower Spindle (6) & remove Spacer (16) from Lower Spindle (6).
- o. Remove Lower Spindle (6) from Stand (1) and replace it with new one. (If found damaged/worn-out)
- p. Examine for any wear or damage to components and replace it if required. Now follow the above steps in reverse manner to reassemble the GC-42.

## Exploded View for GC-42



## Bill of Materials for GC-42

Illustration Number	Description	Part Number	GC-42
1	STAND	320 01 01	1
2	SPINDLE FRONT BUSH	320 01 02	1
3	SPINDLE REAR BUSH	320 01 03	1
4	CLAMP PLATE	320 01 05	1
5	SCALE 11"	320 01 06	1
6	LOWER SPINDLE	320 01 08	1
7	UPPER SPINDLE	320 01 09	1
8	UPPER CUTTER DISC	320 01 10	1
9	PIVOT PIN	320 01 11	1
10	UPPER GEAR	320 01 12	1
11	LOWER GEAR	320 01 13	1
12	LOWER CUTTER DISC	320 01 14	1
13	SUPPORT DISC	320 01 15	1
14	PLAIN WASHER	298 00 90	1
15	HANDLE	320 01 17	1
16	SPACER	320 01 18	1
17	KNOB FOR PIVOT PIN	320 01 19	1
18	CAM WITH LEVER	320 01 16A	1
19	HANDLE ARM	320 01 21	1
20	ADJUSTING NUT	320 01 23	1
21	TUBE	320 01 24	1
22	HEX LOCK NUT	320 01 25	2
23	HEX LOCK NUT	320 01 26	1
24	HEX NUT	320 01 27S	1
25	HEX BOLT	320 01 29	1
26	GRUB SCREW	320 01 33	2
27	ALLEN SCREW	320 01 34	1
28	WASHER	320 01 36	3
29	CSK SCREW	320 01 37	2
30	ROUND HEAD SCREW	320 01 38	3
31	WASHER	320 01 39	4
32	KNOB	298 00 89	1
33	HEX NUT	150 40 25	3
34	PIVOT ARM	320 01 04	1
35	SUPPORT PLATE	320 01 22	1
36	ROLL PIN	320 01 35	1

## Accessories for GC-42

Sr. No	Description	Part Number	GC-42
1	STAND	320 01 32	1
2	SPINDLE FRONT BUSH	320 97 30	2
3	SPINDLE REAR BUSH	320 01 07	1

## Standard Accessories

Ordering No	Suitable for
GC-42	<i>The GC-42 comes complete with the following accessories. Turntable, cutter removal key, stainless 316 mounting bolts and operating manual.</i>

## Optional Accessories

Ordering No	Suitable for
GC-42	<i>Calibrated Centre Bar to extend circular cutting capacity from 22" to 42" diameters.</i>  Spare cutter set



## EU DECLARATION OF CONFORMITY

We hereby certify that the Listed Product stipulated below comply with all relevant provisions of the machinery directive (2006/42/EC) and the national laws and regulations adopting this directive.

**Description** :

**Model Number** :

**Date** :

**Serial Number** :

**Is in conformity with the provisions of the following European Directives: (2006/42/EC) Machinery Safety and Harmonized standards**

**ISO 12100-1: 2010: Safety of Machinery –general Principles for Design –Risk Assessment and Risk Reduction.**

**Registered Office** : 416 Gundecha Industrial Complex, Akuril Road,  
Kandivali East, Mumbai – 400101, Maharashtra, India.

**Web site** : [www.teryair.com](http://www.teryair.com)

**Works** : A-1, Tirupati Udyog Nagar, Sativali Road, Vasai East,  
Palghar – 401208, Maharashtra, India.

CE certification registration no – C E 16832

Issued by – BMQR Certifications Pvt Ltd.  
[www.cemarking-india.com](http://www.cemarking-india.com)

Valid Till – 03/11/2021

Signed for and on behalf of



TERYAIR EQUIPMENT PVT. LTD.

Place of Issue:

Date:



# Warranty Certificate

Every product manufactured by Teryair  
is built to meet the highest standards of quality.

Teryair warrants that the Products, accessories and parts manufactured or supplied by the company be free from defects in material and workmanship for a period of six months from date of Teryair authorized dealer invoice to customer, or one year from date of Teryair invoice to dealer, whichever is earlier. Failure due to normal wear, misapplication, or abuse is, of course, excluded from this warranty.

Since the use of Teryair products and parts is beyond our control, Teryair cannot guarantee the suitability of any product or part for a particular application and Teryair shall not be liable for any consequential damage or expense arising from the use or misuse of its products on any application. Teryair does not warranty bought out products or components such as electric motors and hardware but will assist in directing warranty queries to the dealer/manufacturer responsible. Teryair responsibility is limited solely to replacement or repair of defective Teryair products or components.

Dealer/End User shall have no right or remedy and Teryair shall have no liability or obligation under the warranty, if:

- (i) a Product is altered, changed, modified or tampered with in any way;
- (ii) a Product is damaged after deposit with the transporter for shipment;
- (iii) a Product is not properly preserved, packaged, stored, processed or handled after receipt;
- (iv) a Product is not used and maintained in accordance with Teryair's recommended operating and maintenance manuals, instructions and procedures, if any;
- (v) a Product is not properly incorporated or installed in, or not properly combined with, an Other Product;
- (vi) the issue with a Product is directly or indirectly attributable to, or directly or indirectly results from or arises out of, a failure, substandard performance or other issue with another product, material, component or part not supplied by Teryair;
- (vii) the issue with a Product is directly or indirectly attributable to, or directly or indirectly results from or arises out of, compliance with any design, specification or other specific requirement of Dealer/End User;
- (viii) a Product is used in a manner, with a substance or for a purpose other than the normal manner, substance and purpose for which it is intended or is otherwise subjected to abnormal use or service;
- (ix) a Product is subjected to a power surge, brown out or other similar occurrence;
- (x) the issue with a Product is directly or indirectly attributable to, or directly or indirectly results from or arises out of, normal wear and tear of such Product (including, without limitation, things such as worn seals, diaphragms, balls, O rings, gaskets, chisels, cutters, hoses and other such wearing components);
- (xi) the issue with a Product is directly or indirectly.

Dated :

Product Model Number :

Product Serial Number :

Ajay Bhagat, Q.A. Manager

(Company Seal)

This page is intentionally  
Left blank.