

SDP 50 PPT

DISCHARGE

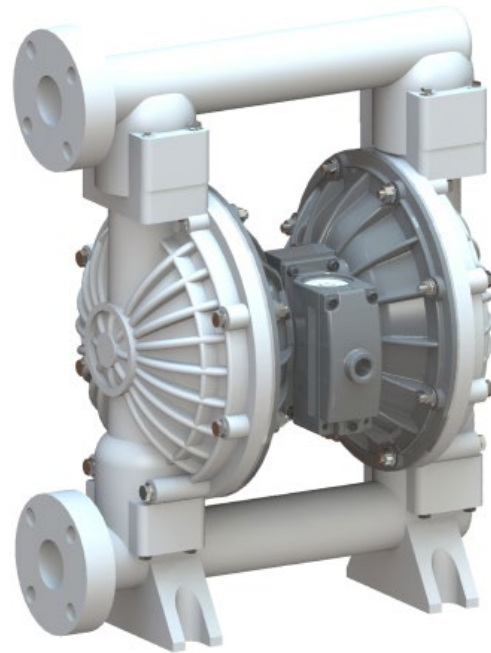
0-496 litres/minute

SIZE, MATERIAL

2", Polypropylene

WEIGHT

28 Kgs



AIR OPERATED DIAPHRAGM PUMP

Polypropylene pumps or PP pumps are lower in cost to Stainless Steel and can be a suitable alternative to a majority of the applications. In applications which need hot operability or outdoor rough environments, Stainless Steel is still preferred.

With these elastomers they are ideal for pumping of fluids like benzyl, diacetone, phosphoric acid, ferric sulfate, isopropyl chloride, transformer oils and many other similar fluids.

These pumps find wide applications across industries, some popular industries are Chemicals, Pharma and Electronic manufacturing.



PTFE Diaphragm

Excellent choice when pumping highly aggressive fluids such as aromatic or chlorinated hydrocarbons, acids, caustics, ketones and acetates.

Temperature range +4°C to +104°C
(+40°F to +220°F)



Approvals and Certifications

All Teryair pumps are CE marked and manufactured under an ISO 9001:2015 Quality system - SGS.



Versatility

This pump handles Viscous fluids, Slurries, Solid laden fluids, Shear Sensitive fluids very well.

No Priming needed

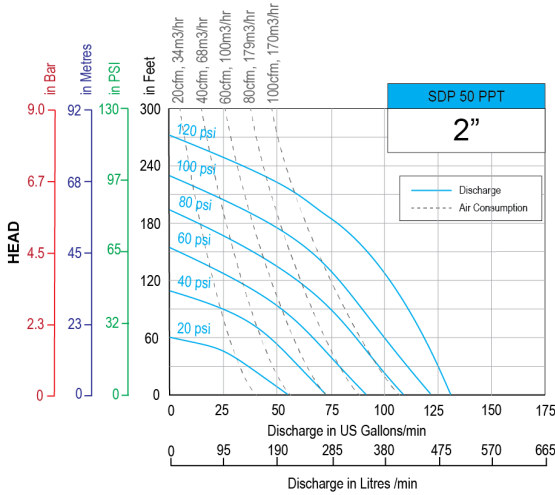
No Foaming of fluid pumped

No Stall damages

Portable

Submerged operation capable

Performance Graph SDP 50 PPT

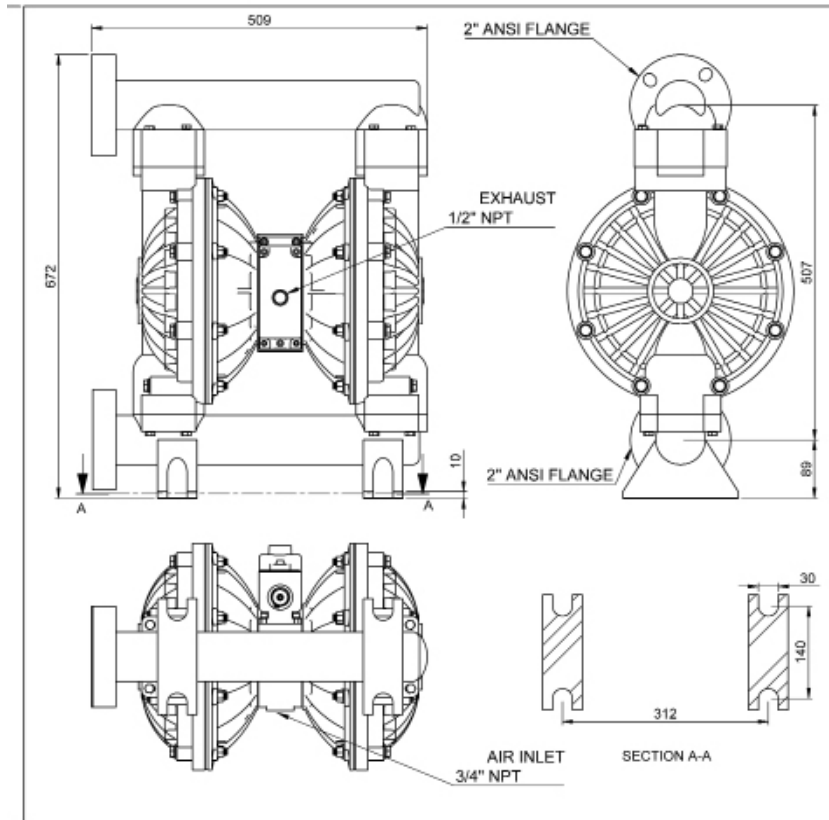


- Performance as measured pumping water at 20degC.
- **Disclaimer:** Actual pump performance may vary depending on number of bends, suction needed and friction in length of discharge piping.
- For guidance on how to select a suitable pump, visit Teryair AODD pump Selection guide.

Technical Data SDP 50 PPT

SDP 50PPT with PTFE fitments	
Maximum Discharge	496 Litres/min (131 US gallons/min)
Suction Head Dry	3.5 meters, 11 feet
Suction Head Wet	8.5 meters, 28 feet
Pump Weight	28 Kgs, 62 lbs
Max Solid Passage	6.4mm (1/4")
Air Distribution System	MaxFlo
Balls / Seals	PTFE
Air Inlet	3/4" NPT
Fluid Inlet, Fluid Outlet	2" ANSIFlange

Dimensions SDP 50PPT



Pump Nomenclature

XX	XX	XX	X	X	X
Air Valve Type	Pump Size	Material of Construction	Material of Diaphragm	Bolted or Clamped	Threading on Inlet and Outlet
DP - Classic	06 - 1/4"	AL - Aluminium	B - Nitrile N - Neoprene S - Santoprene T - PTFE V - Viton H - Hytrel	B - Bolted	R - NPT
	12 - 1/2"				
ADP - Advanced	15 - 1/2"	SS - Stainless Steel 316L		C - Clamped	G - BSPT P - BSPP F - Flanged
SDP - MaxFlo	25 - 1"	PP - Polypropylene			
	40 - 1 - 1/2"	CI - Ductile Iron			
	50 - 2 "				
	75 - 3"				
	100 - 4"				

Repair Kits for SDP 50 PPT Pumps

Repair Kits consist of everything you need to quickly restore the pump. Repair Kits contain one set of Diaphragms, one set of balls, one set of seats or seats+Orings, secondary shaft complete with seals, air valve spool complete with fitted seals, all gaskets, end caps with fitted rings and other wear parts needed to rebuild the pump. Repair kits are threading independant.

<i>Repair KIT Ordering No</i>	<i>Suitable for</i>
2039705	SDP 50 PPT

Air Valve Replacement Kits for SDP 50 PPT Pumps

Air Valve Replacement Kit consists of a complete operational air valve assembly complete. Consisting of Air Valve Body, End Plates, Spool and all seals, o rings and gaskets.

<i>Replacement KIT Ordering No</i>	<i>Suitable for</i>
2039701	NPT fitted SDP 50 PPT