

ADP 40 PPT

DISCHARGE

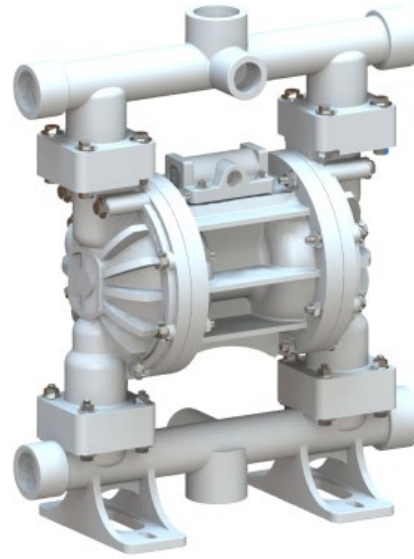
0-299 litres/minute

SIZE, MATERIAL

1-1/2", Polypropylene

WEIGHT

8.2 Kgs



AIR OPERATED DIAPHRAGM PUMP

Polypropylene pumps or PP pumps are lower in cost to Stainless Steel and can be a suitable alternative to a majority of the applications. In applications which need hot operability or outdoor rough environments, Stainless Steel is still preferred.

With these elastomers they are ideal for pumping of fluids like benzyl, diacetone, phosphoric acid, ferric sulfate, isopropyl chloride, transformer oils and many other similar fluids.

These pumps find wide applications across industries, some popular industries are Chemicals, Pharma and Electronic manufacturing.



PTFE Diaphragm

Excellent choice when pumping highly aggressive fluids such as aromatic or chlorinated hydrocarbons, acids, caustics, ketones and acetates.

Temperature range +4°C to +104°C
(+40°F to +220°F)



Approvals and Certifications

All Teryair pumps are CE marked and manufactured under an ISO 9001:2015 Quality system - SGS.



Versatility

This pump handles Viscous fluids, Slurries, Solid laden fluids, Shear Sensitive fluids very well.

No Priming needed

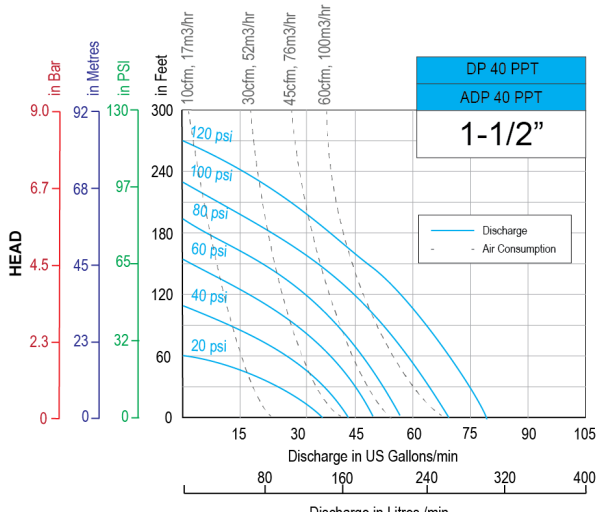
No Foaming of fluid pumped

No Stall damages

Portable

Submerged operation capable

Performance Graph ADP 40 PPT

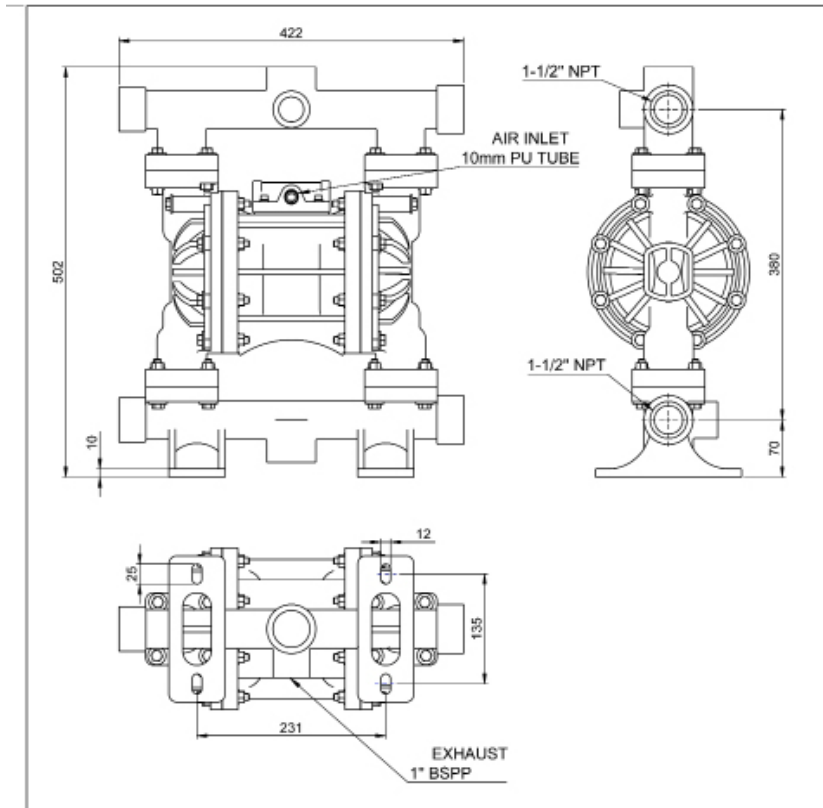


- Performance as measured pumping water at 20degC.
- **Disclaimer:** Actual pump performance may vary depending on number of bends, suction needed and friction in length of discharge piping.
- For guidance on how to select a suitable pump, visit Terryair AODD pump Selection guide.

Technical Data ADP 40 PPT

| | ADP 40PPT with PTFE fitments |
|---------------------------|------------------------------------|
| Maximum Discharge | 299 Litres/min (79 US gallons/min) |
| Suction Head Dry | 2.7 meters, 9 feet |
| Suction Head Wet | 8.5 meters, 28 feet |
| Pump Weight | 8.2 Kgs, 18 lbs |
| Max Solid Passage | 4.8mm (3/16") |
| Air Distribution System | Advanced |
| Balls / Seals | PTFE |
| Air Inlet, Air Exhaust | 10mm PU Tube Connector |
| Fluid Inlet, Fluid Outlet | 1-1/2"NPT |

Dimensions ADP 40PPT



Pump Nomenclature

| XX | XX | XX | X | X | X |
|--|---------------|--|--|---------------------------|--|
| Air Valve Type | Pump Size | Material of Construction | Material of Diaphragm | Bolted or Clamped | Threading on Inlet and Outlet |
| DP - Classic ADP - Advanced SDP - MaxFlo | 06 - 1/4" | AL - Aluminium SS - Stainless Steel 316L PP - Polypropylene CI - Ductile Iron | B - Nitrile N - Neoprene S - Santoprene T - PTFE V - Viton H - Hytrel | B - Bolted C - Clamped | R - NPT G - BSPT P - BSPP F - Flanged |
| | 12 - 1/2" | | | | |
| | 15 - 1/2" | | | | |
| | 25 - 1" | | | | |
| | 40 - 1 - 1/2" | | | | |
| | 50 - 2 " | | | | |
| | 75- 3" | | | | |
| 100 - 4" | | | | | |

Repair Kits for ADP 40 PPT Pumps

Repair Kits consist of everything you need to quickly restore the pump. Repair Kits contain one set of Diaphragms, one set of balls, one set of seats or seats+Orings, secondary shaft complete with seals, air valve spool complete with fitted seals, all gaskets, end caps with fitted rings and other wear parts needed to rebuild the pump. Repair kits are threading independant.

| <i>Repair KIT Ordering No</i> | Suitable for | Illustration Number |
|-----------------------------------|---------------------|--------------------------------|
| 182 97 11 | ADPB 40 PPT | (C+D+10+11) |

Air Valve Replacement Kits for ADP 40 PPT Pumps

Air Valve Replacement Kit consists of a complete operational air valve assembly complete. Consisting of Air Valve Body, End Plates, Spool and all seals, o rings and gaskets.

| <i>Replacement KIT Ordering No</i> | Suitable for | Illustration Number |
|--|---------------------|--------------------------------|
| 182 97 12 | ADPB 40 PPT | (A+10) |