

ADP 25 PPS

DISCHARGE
0-130 litres/minute

SIZE, MATERIAL
1", Polypropylene

WEIGHT
15 Kgs



AIR OPERATED DIAPHRAGM PUMP

Polypropylene pumps or PP pumps are lower in cost to Stainless Steel and can be a suitable alternative to a majority of the applications. In applications which need hot operability or outdoor rough environments, Stainless Steel is still preferred.

With these elastomers they are ideal for pumping of fluids like benzyl, diacetone, phosphoric acid, ferric sulfate, isopropyl chloride, transformer oils and many other similar fluids.

These pumps find wide applications across industries, some popular industries are Chemicals, Pharma and Electronic manufacturing.



Santoprene Diaphragm

Good abrasion resistance. Low cost. Can handle mild acids and alkalis well. Excellent low cost alternative to ptfe. Excellent suction capabilities Excellent general purpose diaphragm.
Temperature range -40 C to +107 C (-40 F to +225 F)



Approvals and Certifications

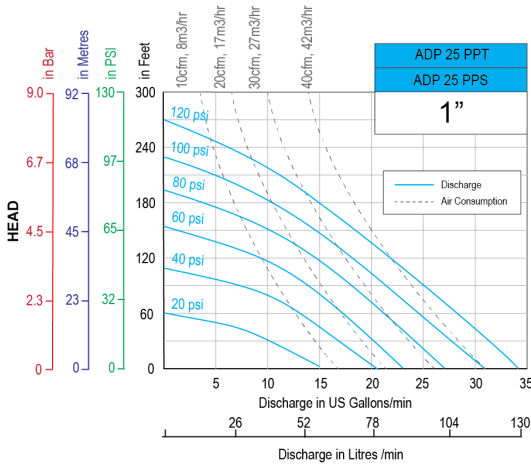
All Teryair pumps are CE marked and manufactured under an ISO 9001:2015 Quality system - SGS.



Versatility

This pump handles Viscous fluids, Slurries, Solid laden fluids, Shear Sensitive fluids very well.
No Priming needed
No Foaming of fluid pumped
No Stall damages
Portable
Submerged operation capable

Performance Graph ADP 25 PPS

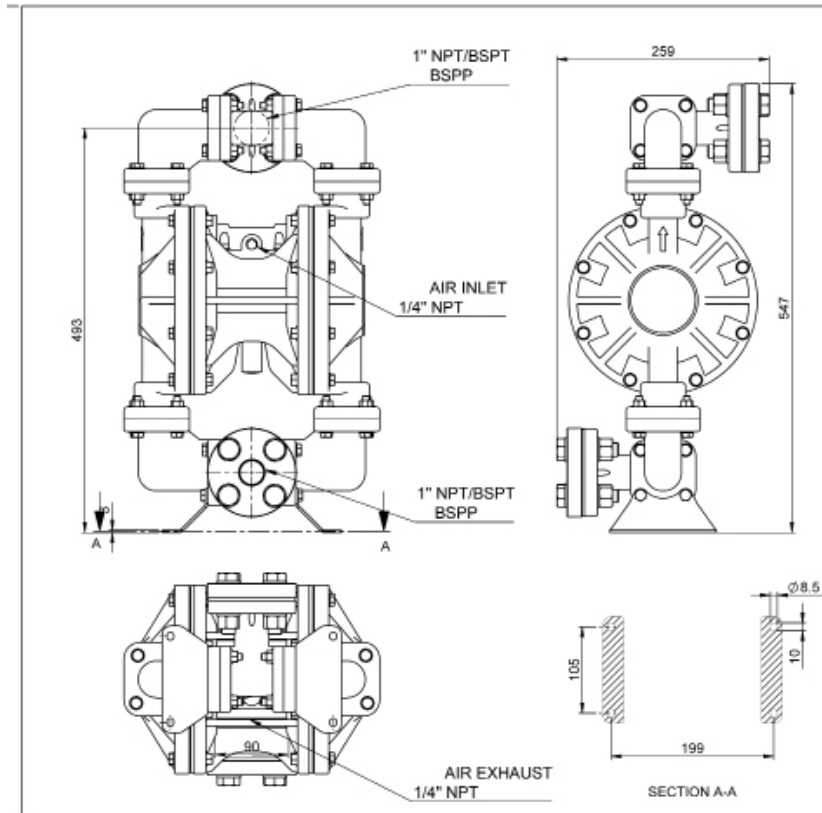


- Performance as measured pumping water at 20degC.
- **Disclaimer:** Actual pump performance may vary depending on number of bends, suction needed and friction in length of discharge piping.
- For guidance on how to select a suitable pump, visit Teryair AODD pump Selection guide.

Technical Data ADP 25 PPS

	ADP 25PPS with Santoprene fitments
Maximum Discharge	130 Litres/min (34 US gallons/min)
Suction Head Dry	2.7 meters, 9 feet
Suction Head Wet	8.5 meters, 28 feet
Pump Weight	15 Kgs, 33 lbs
Max Solid Passage	3.2 mm (1/8")
Air Distribution System	ADP Advanced System
Balls / Seals	PTFE
Air Inlet, Air Exhaust	1/4" NPT/BSPT/BSPP
Fluid Inlet, Fluid Outlet	1" NPT/BSPT/BSPP

Dimensions ADP 25PPS



Pump Nomenclature

XX	XX	XX	X	X	X
Air Valve Type	Pump Size	Material of Construction	Material of Diaphragm	Bolted or Clamped	Threading on Inlet and Outlet
DP - Classic ADP - Advanced SDP - MaxFlo	06 - 1/4"	AL - Aluminium SS - Stainless Steel 316L PP - Polypropylene CI - Ductile Iron	B - Nitrile N - Neoprene S - Santoprene T - PTFE V - Viton H - Hytrel	B - Bolted C - Clamped	R - NPT G - BSPT P - BSPP F - Flanged
	12 - 1/2"				
	15 - 1/2"				
	25 - 1"				
	40 - 1 - 1/2"				
	50 - 2 "				
	75 - 3"				
100 - 4"					

Repair Kits for ADP 25 PPS Pumps

Repair Kits consist of everything you need to quickly restore the pump. Repair Kits contain one set of Diaphragms, one set of balls, one set of seats or seats+Orings, secondary shaft complete with seals, air valve spool complete with fitted seals, all gaskets, end caps with fitted rings and other wear parts needed to rebuild the pump. Repair kits are threading independant.

Repair KIT Ordering No	Suitable for
61297075	ADP 25 PPS

Air Valve Replacement Kits for ADP 25 PPS Pumps

Air Valve Replacement Kit consists of a complete operational air valve assembly complete. Consisting of Air Valve Body, End Plates, Spool and all seals, o rings and gaskets.

Replacement KIT Ordering No	Suitable for
6129711	NPT fitted ADP 25 PPS
6129712	BSPT fitted ADP 25 PPS
6129713	BSPP fitted ADP 25 PPS