

## **ADP 06 PPT**

DISCHARGE

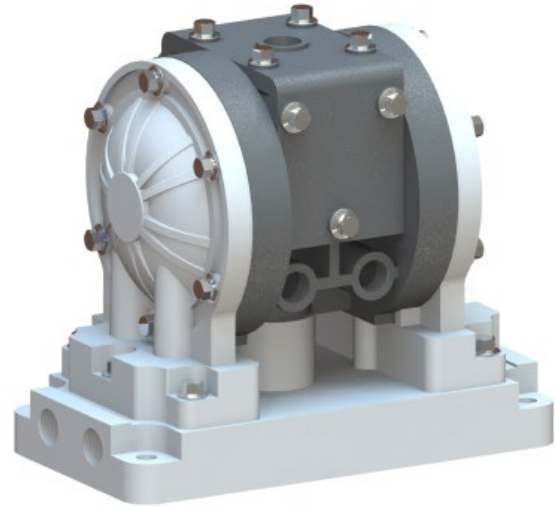
**0-18 litres/minute**

SIZE, MATERIAL

**1/4", Polypropylene**

WEIGHT

**1.2 Kgs**



## **AIR OPERATED DIAPHRAGM PUMP**

Polypropylene pumps or PP pumps are lower in cost to Stainless Steel and can be a suitable alternative to a majority of the applications. In applications which need hot operability or outdoor rough environments, Stainless Steel is still preferred.

These pumps are usually combined with PTFE.

With these elastomers they are ideal for pumping of fluids like benzyl, diacetone, phosphoric acid, ferric sulfate, isopropyl chloride, transformer oils and many other similar fluids.

These pumps find wide applications across industries, some popular industries are Chemicals, Pharma and Electronic manufacturing.



### **PTFE Diaphragm**

Excellent choice when pumping highly aggressive fluids such as aromatic or chlorinated hydrocarbons, acids, caustics, ketones and acetates.

Temperature range +4°C to +104°C  
(+40°F to +220°F)



### **Approvals and Certifications**

All Teryair pumps are CE marked and manufactured under an ISO 9001:2015 Quality system - SGS.



### **Versatility**

This pump handles Viscous fluids, Slurries, Solid laden fluids, Shear Sensitive fluids very well.

No Priming needed

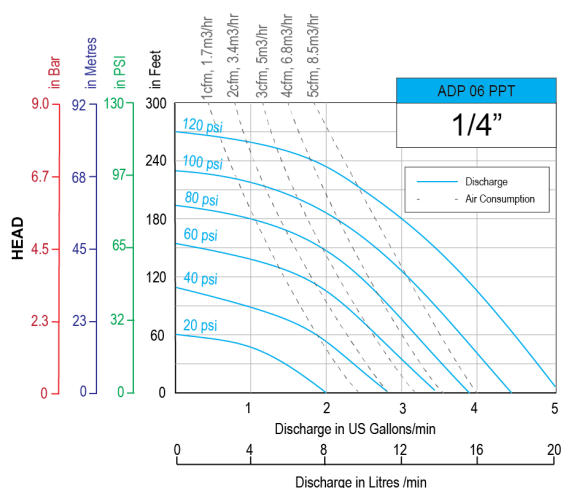
No Foaming of fluid pumped

No Stall damages

Portable

Submerged operation capable

## Performance Graph ADP 06 PPT

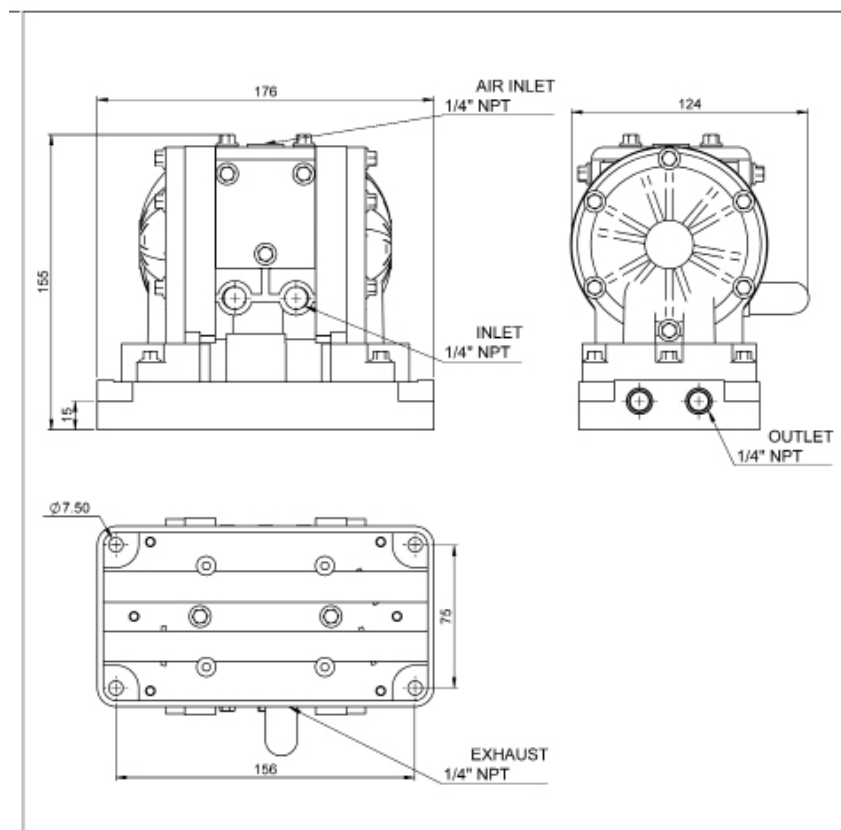


- Performance as measured pumping water at 20degC.
- **Disclaimer:** Actual pump performance may vary depending on number of bends, suction needed and friction in length of discharge piping.
- For guidance on how to select a suitable pump, visit Terylair AODD pump Selection guide.

## Technical Data ADP 06 PPT

|                           | ADP 06PPT with PTFE fitments     |
|---------------------------|----------------------------------|
| Maximum Discharge         | 18 Litres/min (5 US gallons/min) |
| Suction Head Dry          | 4 meters, 13 feet                |
| Suction Head Wet          | 9 meters, 30 feet                |
| Pump Weight               | 1.2Kgs, 2.6 lbs                  |
| Max Solid Passage         | 0.4mm (1/64")                    |
| Air Distribution System   | ADP Advanced System              |
| Balls / Seals             | PTFE, with flap                  |
| Air Inlet, Air Exhaust    | 1/4" NPT                         |
| Fluid Inlet, Fluid Outlet | 1/4" NPT                         |

## Dimensions ADP 06PPT



## Pump Nomenclature

| XX   | XX            | XX   | X  | X                         | X  |
|--|---------------|--|--|---------------------------|--|
| Air Valve Type                                 | Pump Size     | Material of Construction   | Material of Diaphragm  | Bolted or Clamped         | Threading on Inlet and Outlet                  |
| DP - Classic<br>ADP - Advanced<br>SDP - MaxFlo | 06 - 1/4"     | AL - Aluminium<br>SS - Stainless Steel 316L<br>PP - Polypropylene<br>CI - Ductile Iron | B - Nitrile<br>N - Neoprene<br>S - Santoprene<br>T - PTFE<br>V - Viton<br>H - Hytrel | B - Bolted<br>C - Clamped | R - NPT<br>G - BSPT<br>P - BSPP<br>F - Flanged |
|  | 12 - 1/2"     |  |  |                           |  |
|  | 15 - 1/2"     |  |  |                           |  |
|  | 25 - 1"       |  |  |                           |  |
|  | 40 - 1 - 1/2" |  |  |                           |  |
|  | 50 - 2 "      |  |  |                           |  |
|  | 75- 3"        |  |  |                           |  |
|  | 100 - 4"      |  |  |                           |  |

## Repair Kits for ADP 06 PPT Pumps

Repair Kits consist of everything you need to quickly restore the pump. Repair Kits contain one set of Diaphragms, one set of balls, one set of seats or seats+Orings, secondary shaft complete with seals, air valve spool complete with fitted seals, all gaskets, end caps with fitted rings and other wear parts needed to rebuild the pump. Repair kits are threading independant.

| Repair KIT<br>Ordering No | Suitable for | Illustration<br>Number |
|---------------------------|--------------|------------------------|
| 181 97 05                 | ADPB 06 PPT  | (B+C+D)                |

## Air Valve Replacement Kits for ADP 06 PPT Pumps

Air Valve Replacement Kit consists of a complete operational air valve assembly complete. Consisting of Air Valve Body, End Plates, Spool and all seals, o rings and gaskets.

| Replacement KIT<br>Ordering No | Suitable for | Illustration<br>Number |
|--------------------------------|--------------|------------------------|
| 181 97 01                      | ADPB 06 PPT  | (A)                    |