

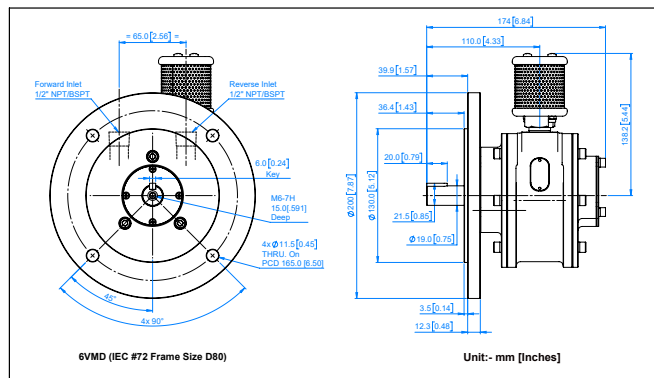
6VM Ex Pneumatic Vane Motor Stainless Steel Construction



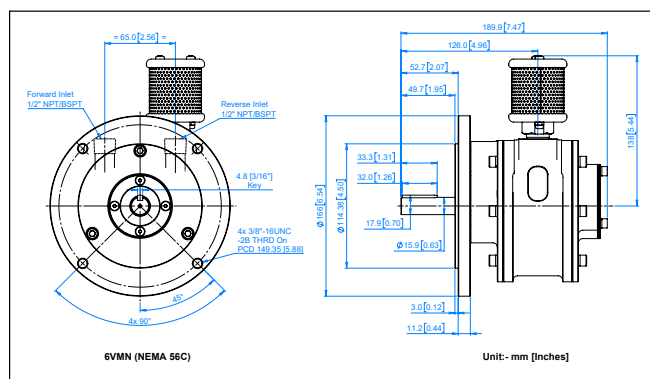
Face

IEC / Nema

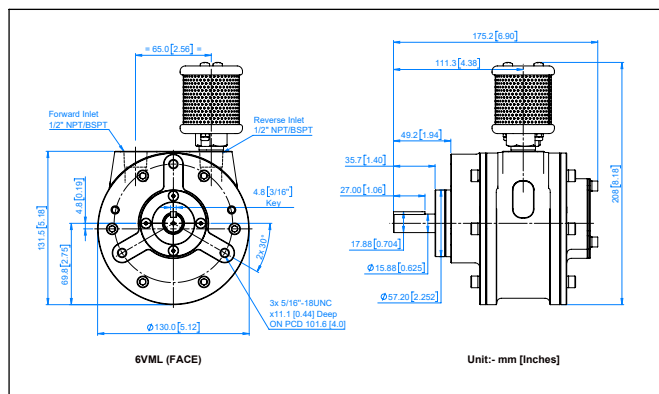
Dimensions Data - IEC Mounting-6VM



Dimensions Data - Nema Mounting-6VM



Dimensions Data - Face Mounting-6VM



PERFORMANCE

Max Output Power	3kW (4hp)
Speed at Max Power	3000 RPM
Maximum Torque	13Nm (115lb-In)
Air Consumption at Max Power	228m ³ /hr (134cfm)
Ambient Safe Operating Temperature	
• Non Explosive Zone	0°C to 120°C
• Explosive Zone	0°C to 40°C
Maximum Allowable Operating Speed	
In any Direction	3000 RPM
Working Pressure	7kg/cm ² (100 psi)
Material of Construction	

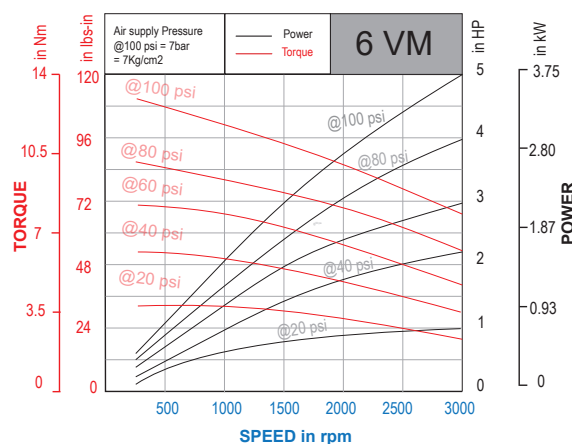
Equivalent Casting Grade - SS316L

Rotor - SS316L | Bearing - SS

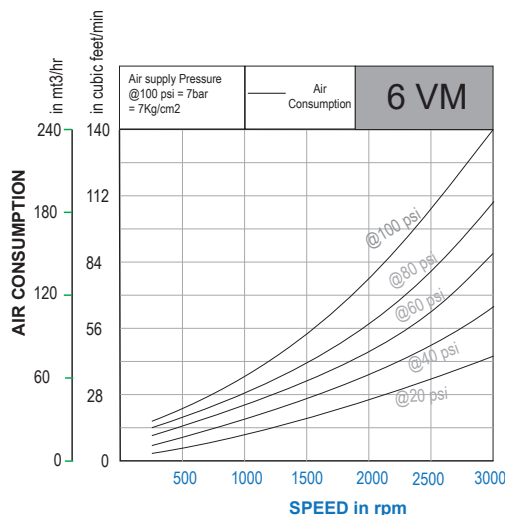
Fastners - SS 304

Rotor Blade - Polyamide

Power & Torque Graph



Air Consumption Graph



Weight & Finish

Air Motor Type	Weight	Finish
Face Mounting	18.3 kgs (8.3 lbs)	Shining Buff
IEC Mounting	26.5 kgs (12.0 lbs)	Shining Buff
NEMA Mount	26.5 kgs (12.0 lbs)	Shining Buff

X	X	X	X	X	X	X	X	X
Size	Motor Type	Mounting	Lubricated or Lube-Free	Material of Construction	Explosion Proof	Threading on Inlet and Outlet	Direction of Rotation	No of Vanes
1	VM-Vane Type Motor	L - Face Type	O - Lube Free	L - SG Iron	EX	R - NPT	C - Clockwise	4
2		S - Foot Type		S - Stainless Steel		G - BSPT	A - Anticlockwise	6
4		T - Hub		H - SGI Housing with Aluminum End Plates		P - BSPP	R - Reversible	8
6		D - IEC Flange Type						
8		N - NEMA Flange Type						
16								

For example

- 4VMLOLEXRR4 is a size 4, Vane type, Face Mounted, SG Iron MOC. Explosion Proof, NPT Threading, Reversible with 4 Vanes
- 4VMLOLEXGR8 is a Size 4, Vane type, Face Mounted, SG Iron MOC, Explosion Proof, BSPT Threading, Reversible with 8 Vanes
- 1VMTOLEXRA4 is a Size 1, Vane type, Hub Mounted, SG Iron MOC, Explosion Proof, NPT Threading, Anti-clockwise with 4 Vanes
- 2VMTOHEXRR4 is a Size 2, Vane type, Hub Mounted, SG Iron Hsg. with Aluminium End Plates, Explosion Proof, NPT Threading, reversible with 4 Vanes

Ex Code

Model : 1VM-SS Series, 2VM-SS Series,
4VM-SS Series, 6VM-SS Series.

Ex II 2 GD Ex h IIC T6 Gb

Ex II 2 GD Ex h IIC T85°C Db

Amb. Temp (+1° C to +40° C)

Muffler for 6VM Series

Part No	Description	Thread Connection	Motor Size
8059804	Muffler NPT	1/2" NPT	6VM
8059805	Muffler BSPT	1/2" BSPT	6VM

