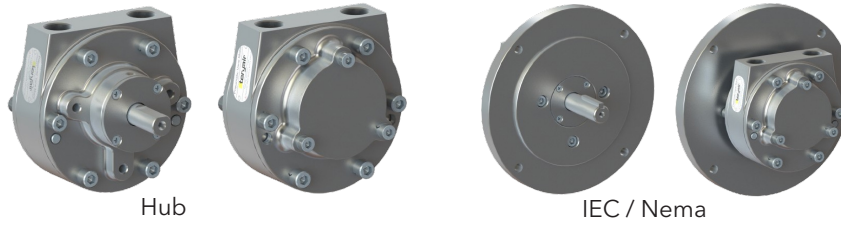
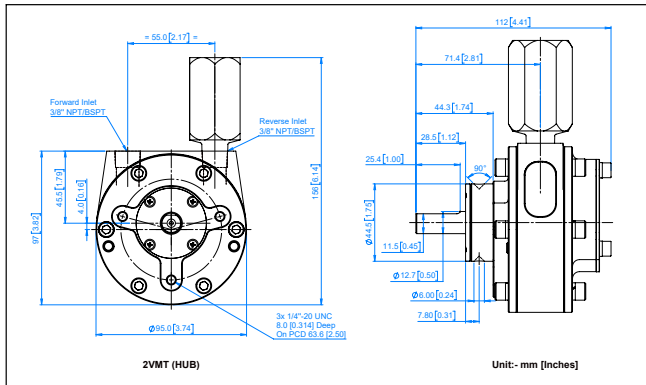


Technical Data

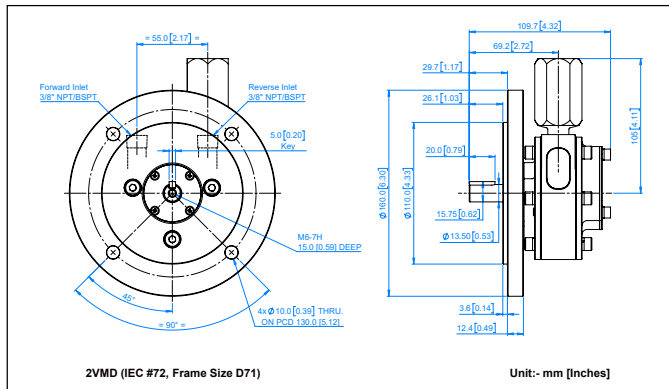
2VM Ex Pneumatic Vane Motor Stainless Steel Construction



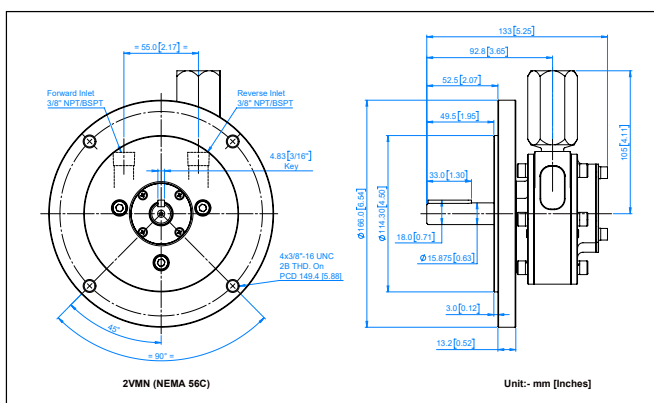
Dimensions Data - Hub Mounting-2VM



Dimensions Data - IEC Mounting-2VM



Dimensions Data - Nema Mounting-2VM



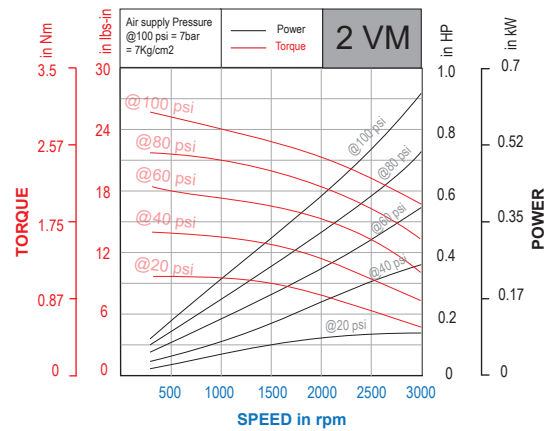
PERFORMANCE

Max Output Power	0.68kW (0.91hp)
Speed at Max Power	3000 RPM
Maximum Torque	3.05Nm (26.99lb-in)
Air Consumption at Max Power	49.5m ³ /hr (30cfm)
Ambient Safe Operating Temperature	
• Non Explosive Zone	0°C to 120°C
• Explosive Zone	0°C to 40°C
Maximum Allowable Operating Speed	
In any Direction	4000 RPM
Working Pressure	7kg/cm ² (100 psi)

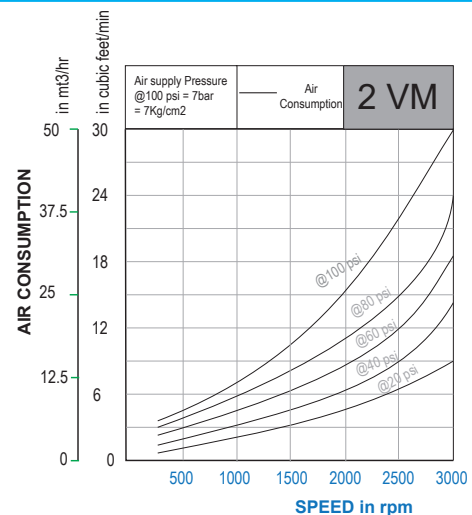
Material of Construction

End Plates, Cylinder - CF3M (Equivalent Casting Grade -SS316L)
 Rotor - SS316L
 Bearing - SS
 Fastners - SS 304

Power & Torque Graph



Air Consumption Graph



Weight & Finish

Air Motor Type	Weight	Finish
Hub Mounting	6.2 kgs (2.8 lbs)	Shining Buff
IEC Mounting	11.0 kgs (5.0 lbs)	Shining Buff
NEMA Mounting	11.0 kgs (5.0 lbs)	Shining Buff

Nomenclature

X	X	X	X	X	X	X	X	X
Size	Motor Type	Mounting	Lubricated or Lube-Free	Material of Construction	Explosion Proof	Threading on Inlet and Outlet	Direction of Rotation	No of Vanes
1	VM-Vane Type Motor	L- Face Type	O - Lube Free	L - SG Iron	EX	R - NPT	C - Clockwise	4
2		S- Foot Type		S - Stainless Steel		G - BSPT	A - Anticlockwise	6
4		T - Hub		H - SGI Housing with Aluminum End Plates		P - BSPP	R - Reversible	8
6		D - IEC Flange Type						
8		N - NEMA Flange Type						
16								

For example

- 4VMLOEXRR4 is a size 4, Vane type, Face Mounted, SG Iron MOC. Explosion Proof, NPT Threading, Reversible with 4 Vanes
- 4VMLOLEXGR8 is a Size 4, Vane type, Face Mounted, SG Iron MOC, Explosion Proof, BSPT Threading, Reversible with 8 Vanes
- 1VMTOLEXRA4 is a Size 1, Vane type, Hub Mounted, SG Iron MOC, Explosion Proof, NPT Threading, Anti-clockwise with 4 Vanes
- 2VMTOHEXRR4 is a Size 2, Vane type, Hub Mounted, SG Iron Hsg. with Aluminium End Plates, Explosion Proof, NPT Threading, reversible with 4 Vanes

Ex Code

Model : 1VM-SS Series, 2VM-SS Series,
4VM-SS Series, 6VM-SS Series.

⊕ II 2 GD Ex h IIC T6 Gb

⊕ II 2 GD Ex h IIIC T85°C Db

Amb. Temp (+1° C to +40° C)

Muffler for 2VM Series

Part No	Description	Thread Connection	Motor Size
8039808	Muffler NPT	3/8" NPT	2VM
8039809	Muffler BSPT	3/8" BSPT	2VM

