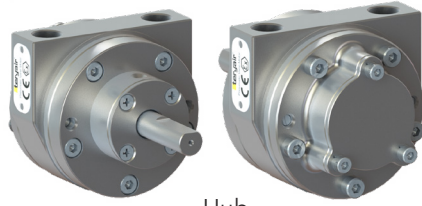
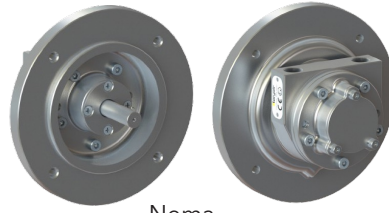


Technical Data

1VM Ex Pneumatic Vane Motor Stainless Steel Construction

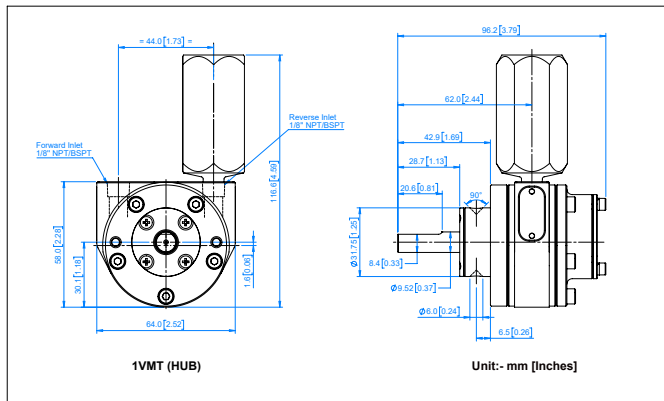


Hub

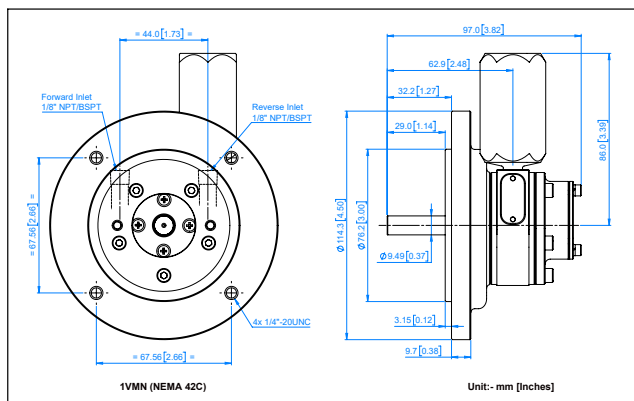


Nema

Dimensions Data - Hub Mounting-1VM



Dimensions Data - Nema Mounting-1VM



Weight & Finish

Air Motor Type	Weight	Finish
Hub Mounting	2.2 kgs (1.0 lbs)	Shining Buff
Nema Mounting	3.5 kgs (1.6 lbs)	Shining Buff

PERFORMANCE

Max Output Power	0.33kW (0.45hp)
Free Speed	7000 RPM
Maximum Torque	0.65Nm (5.75lb-In)
Air Consumption at Max Power	35.1m ³ /hr (20.5cfm)
Ambient Safe tOperating Temperature	
• Non Explosive Zone	0°C to 120°C
• Explosive Zone	0°C to 40°C
Maximum Allowable Operating Speed	
In any Direction	7000 RPM
Working Pressure	7kg/cm ² (100 psi)

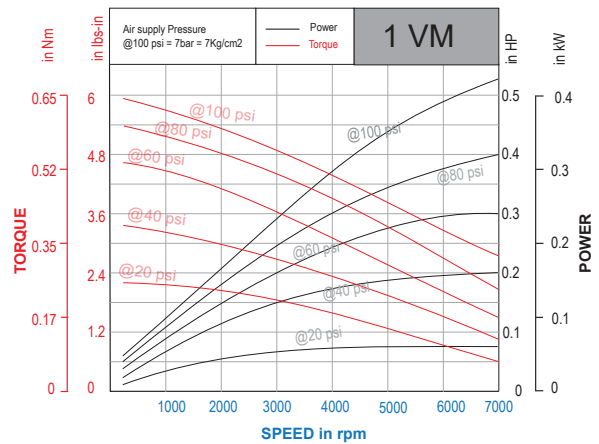
Material of Construction

End Plates, Cylinder - CF3M (Equivalent Casting Grade -SS316L)

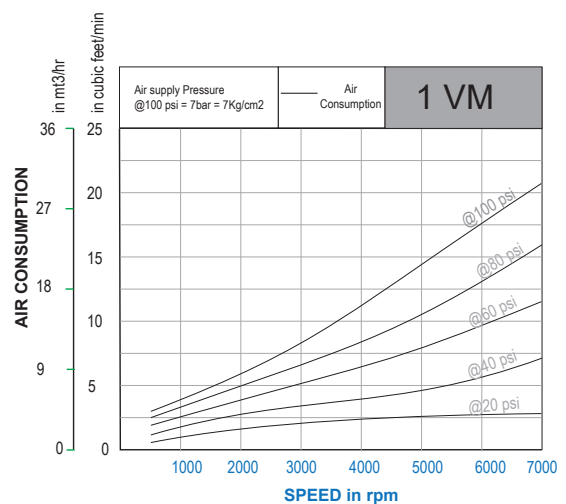
Rotor - SS316L

Bearing - SS | Fastners - SS 304

Power & Torque Graph



Air Consumption Graph



Nomenclature

X	X	X	X	X	X	X	X	X
Size	Motor Type	Mounting	Lubricated or Lube-Free	Material of Construction	Explosion Proof	Threading on Inlet and Outlet	Direction of Rotation	No of Vanes
1	VM-Vane Type Motor	L- Face Type	O - Lube Free	L - SG Iron	EX	R- NPT	C - Clockwise	4
2		S- Foot Type		S - Stainless Steel		G - BSPT	A - Anticlockwise	6
4		T - Hub		H - SGI Housing with Aluminum End Plates		P - BSPP	R - Reversible	8
6		D - IEC Flange Type						
8		N - NEMA Flange Type						
16								

For example

- 4VMLOEXRR4 is a size 4, Vane type, Face Mounted, SG Iron MOC. Explosion Proof, NPT Threading, Reversible with 4 Vanes
- 4VMLOEXGR8 is a Size 4, Vane type, Face Mounted, SG Iron MOC, Explosion Proof, BSPT Threading, Reversible with 8 Vanes
- 1VMTOLEXRA4 is a Size 1, Vane type, Hub Mounted, SG Iron MOC, Explosion Proof, NPT Threading, Anti-clockwise with 4 Vanes
- 2VMTOHEXRR4 is a Size 2, Vane type, Hub Mounted, SG Iron Hsg. with Aluminium End Plates, Explosion Proof, NPT Threading, reversible with 4 Vanes

Ex Code

Model : 1VM-SS Series, 2VM-SS Series,
4VM-SS Series, 6VM-SS Series.

⊕ II 2 GD Ex h IIC T6 Gb

⊕ II 2 GD Ex h IIIC T85°C Db

Amb. Temp (+1° C to +40° C)

Muffler for 1VM Series

Part No	Description	Thread Connection	Motor Size
8119803	Muffler NPT	1/8" NPT	1VM
8119804	Muffler BSPT	1/8" BSPT	1VM

